

MAHI TAHI

Māori students enjoying and achieving success as Māori

85% NCEA Level 2 & qualifications for tertiary education

The impact of Kia Eke Panuku on existing institutions

The term *institutions* is used to describe the structures, processes and procedures that schools create to monitor their performance and effect innovation and improvement.

Kia Eke Panuku does not seek to impose new institutions on schools but invites them to build on existing institutions and re-imagine their use to realise the commitment they have made:

*...to give life to Ka Hikitia
and to address the aspirations of
Māori communities by supporting Māori students
to pursue their potential.*

Commitment to Māori enjoying and achieving success as Māori

When school institutions clearly reflect and communicate this intent it becomes possible for the school to embark on the simultaneous success trajectories proposed by Kia Eke Panuku.

Māori enjoying and achieving success as Māori is broad and multi-dimensional. School institutions will secure pathways to academic success. They will ensure our rangatahi have opportunities to develop as culturally located young people secure in their identity, language and culture.

Mahi Tahī

The term Mahi Tahī speaks of collaboration and working as one. We use it to describe the work of everyone involved in the dynamic interplay of institutions within a Kia Eke Panuku school and community.

A theory-based model of reform that encourages proactive engagement with Māori

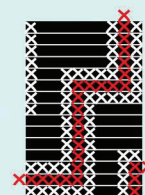
Schools commit to building on a theoretical base, rooted in Kaupapa Māori Theory and Critical Theories, to rise to the moral imperative of the Treaty of Waitangi, enacted through Ka Hikitia - *our Māori students enjoying and achieving educational success as Māori.*

Within each school, we are activating ako - the critical cycle of learning, unlearning and relearning in order to disrupt the status quo - to think and do things differently in order to get different results for rangatahi.

A responsive model

We know that every journey is its own journey. Each school context - its policies, the school personnel involved, its whānau, hapū and iwi and the students themselves - all influence and impact on outcomes for Māori students.

This document is part of the Voices from Kia Eke Panuku series, written by members of the team to support schools on their Kia Eke Panuku journey.



Kia Eke Panuku
building on success